

## Movie segments to spice up your grammar classes

### INTERMEDIATE AND ADVANCED

By Claudio Azevedo • claudioazv@gmail.com

#### PAST PERFECT X PAST PERFECT CONTINUOUS THE PROPOSAL



A. FILL IN THE BLANKS WITH THE PAST PERFECT OR THE PAST PERFECT CONTINUOUS FORM OF THE VERBS IN PARENTHESES. WHEN BOTH ARE POSSIBLE, USE THE PAST PERFECT CONTINUOUS. THEN WRITE **(F)** IF THE PROVIDED ACTION IS FINISHED OR **(U)** IF IT IS UNFINISHED.

- SHE \_\_\_\_\_ (LEAVE) THE HOUSE WHEN THE DOG STARTED FOLLOWING HER OUTSIDE. ( )
- SHE \_\_\_\_\_ (TALK) ON THE PHONE FOR A FEW MINUTES WHEN THE EAGLE FETCHED THE DOG. ( )
- HE EAGLE \_\_\_\_\_ (FLY) WITH THE DOG ON ITS CLAWS WHEN SHE THREW THE PHONE AT THE BIRD. ( )
- THE EAGLE \_\_\_\_\_ (DROP) THE DOG WHEN SHE CAUGHT HIM BEFORE HE HIT THE GROUND. ( )
- SHE \_\_\_\_\_ (RUN) AWAY FROM THE EAGLE WHEN IT SUDDENLY TOOK HER PHONE FROM HER HANDS. ( )
- SHE \_\_\_\_\_ (CARRY) THE DOG AROUND THE YARD WHEN HER FIANCE AND HIS FAMILY FINALLY SAW HER THERE. ( )
- SHE \_\_\_\_\_ (LET) THE DOG GO WHEN HER FIANCE HELD HER IN THE GARDEN. ( )

#### MODAL VERBS FOR POSSIBILITY, SPECULATION - MIGHT COULD CAN'T THE MIST

A. WATCH THE MOVIE SEGMENT.

B. IN COLUMN 1, WRITE **YES** IF YOU BELIEVE IT IS A POSSIBLE EXPLANATION FOR THE MYSTERY, AND **NO** IF YOU BELIEVE IT IS AN IMPOSSIBLE EXPLANATION.

IN COLUMN 2, CHECK THE ITEMS THAT THE CHARACTERS IN THE MOVIE BELIEVE ARE POSSIBLE EXPLANATIONS FOR WHAT IS (IN) THE MIST.

MY OPINION	CHARACTERS' OPINIONS	POSSIBLE EXPLANATIONS
		A MILITARY OPERATION
		A POLLUTION CLOUD
		TERRORIST ATTACK
		SOME KIND OF CHEMICAL EXPLOSION
		DEATH
		JUST THEIR IMAGINATION
		AN EARTHQUAKE
		ALIENS



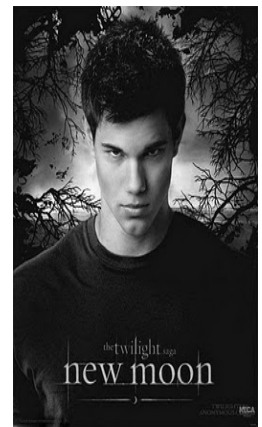
		THE END OF DAYS
		A POISONOUS GAS CLOUD

- C. NOW WRITE SENTENCES WITH MIGHT, COULD OR CAN'T TO EXPRESS POSSIBILITY OR IMPOSSIBILITY, SPECULATING ABOUT WHAT IS IN THE MIST.
- D. WHAT WOULD YOU DO IF YOU WERE THE WOMAN WHO WANTED TO GO INTO THE MIST IN ORDER TO RESCUE HER EIGHT YEAR-OLD DAUGHTER?
- E. TALK TO A PARTNER AND DECIDE WHAT THE MOST PROBABLE EXPLANATION TO THE SITUATION IS. JUSTIFY YOUR ANSWER

### NEW MOON – THE TWILIGHT SAGA PRESENT PERFECT X PRESENT PERFECT CONTINUOUS

I. WATCH THE MOVIE SEGMENT AND COMPLETE THE BLANKS WITH EITHER THE PRESENT PERFECT OR THE PRESENT PERFECT CONTINUOUS FORM OF THE GIVEN VERBS. WHEN BOTH ARE POSSIBLE, USE CONTINUOUS FORM.

- BELLA \_\_\_\_\_ (FEEL) SAD FOR SEVERAL MONTHS.
- THE WEATHER \_\_\_\_\_ (CHANGE) SIGNIFICANTLY IN THIS PERIOD OF TIME.
- BOTH HER BOYFRIEND AND HER BEST FRIEND, ALICE, \_\_\_\_\_ (LEAVE) BELLA ALONE.
- THE TREE LEAVES \_\_\_\_\_ (FALL).
- IT \_\_\_\_\_ (SNOW) SEVERAL TIMES IN DECEMBER.
- BELLA \_\_\_\_\_ (MISS) HER BOYFRIEND ALL THIS TIME.
- ACCORDING TO BELLA, A HUGE HOLE \_\_\_\_\_ (PUNCH - PASSIVE VOICE) THROUGH HER CHEST.
- SHE \_\_\_\_\_ (CRY) SEVERAL NIGHTS SINCE OCTOBER.
- SHE \_\_\_\_\_ (WRITE) EMAILS THAT ALICE \_\_\_\_\_ (NEVER - RECEIVE)
- BELLA'S DAD \_\_\_\_\_ (BE) WORRIED ABOUT HER.



II. TALK TO A PARTNER:

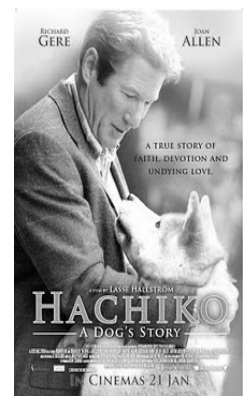
- WHAT SHOULD BELLA DO IN ORDER NOT TO BE SO SAD?
- IS BELLA RIGHT TO REACT THE WAY SHE DID OR IS IT BETTER TO GO OUT WITH FRIENDS AND FORGET ABOUT HER BOYFRIEND?
- WHAT WOULD YOU DO IF YOU WERE IN BELLA'S SHOES?
- HAVE YOU EVER FELT LIKE BELLA? TALK ABOUT IT, IF YOU WISH.

### HACHIKO – A DOG'S STORY PASSIVE VOICE WITH SIMPLE PAST

A - TALK TO A PARTNER.

- DO YOU HAVE A PET? (OR HAVE YOU EVER HAD A PET?) TALK ABOUT IT.
  - DO YOU PREFER DOGS OR CATS? WHY?
  - IS IT IMPORTANT TO HAVE PETS? WHY?
  - WHEN ARE PETS HELPFUL IN A PERSON'S LIFE? EXPLAIN IT.
  - WHEN ARE PETS HARMFUL TO A PERSON?
  - WHAT ARE THE ADVANTAGES AND DISADVANTAGES OF HAVING PETS?
- I. WATCH THE MOVIE SEGMENT AND CHECK THE ALTERNATIVES THAT ARE ACTIONS THAT YOU SCENE.

- ( ) A CHINESE MONK PUT THE COLLAR AROUND HACHI'S NECK.
- ( ) HE PUT HACHI IN A CAGE.
- ( ) HE TOOK HACHI TO A TRAIN STATION.
- ( ) HE FED HACHI.
- ( ) A COUPLE OF GUYS PICKED HACHI UP AT THE AIRPORT.
- ( ) THE BAGGAGE CARRIER ACCIDENTALLY DROPPED HACHI'S CAGE ON THE STATION PLATF
- ( ) SOMEONE FOUND THE BROKEN CAGE.
- ( ) PARKER FOUND AND CARRIED HACHI HOME.



II. NOW REWRITE THE SENTENCES ABOVE IN THE PASSIVE VOICE. MAKE SURE YOU WRITE AFFIRMATIVE OR NEGATIVE SENTENCES, ACCORDING TO THE INFORMATION PRESENTED IN THE SEGMENT.

EX: 1. THE COLLAR WAS PUT AROUND HACHI'S NECK (BY A CHINESE MONK).

**1ST AND 2ND CONDITIONAL  
THE BOX**



A. READ THE PASSAGE BELOW AND COMPLETE THE BLANKS WITH THE VERBS IN PARENTHESES  
**CONDITIONAL**. YOU HAVE JUST RECEIVED THE VISIT OF A TOTAL STRANGER WHO GIVES YOU A MYSTERIOUS BOX WITH A BUTTON AND MAKES THE FOLLOWING OFFER TO YOU:

**IF YOU \_\_\_\_\_ (PUSH) THE BUTTON, TWO THINGS \_\_\_\_\_ (HAPPEN). FIRST, SOMEONE, SOMEWHERE IN THE WORLD, WHOM YOU DON'T KNOW, \_\_\_\_\_ (DIE). SECOND, YOU \_\_\_\_\_ (RECEIVE) A PAYMENT OF ONE MILLION DOLLARS. TAX FREE. THE PAYMENT \_\_\_\_\_ (BE) DELIVERED BY ME IN CASH TO YOU BY ME IN CASH.**

C. NOW DISCUSS THE FOLLOWING QUESTIONS WITH A PARTNER. REMEMBER THAT YOU ARE TALKING ABOUT AN UNREAL SITUATION, SO YOU MUST USE THE **SECOND CONDITIONAL**. THEN WRITE DOWN YOUR ANSWERS. START THEM WITH IF...

1. WHAT WOULD YOU DO IF YOU WERE HER SHOES?  
IF...
2. HOW WOULD YOU FEEL IF YOU PUSHED THE BUTTON?  
IF ...
3. HOW WOULD YOU FEEL IF YOU DIDN'T PUSH THE BUTTON?
4. WOULD YOU PUSH THE BUTTON IF YOU NEEDED THAT MONEY TO SAVE YOUR SON/DAUGHTER'S LIFE?

- D. WATCH THE SECOND PART OF THE SEGMENT AND ANSWER THE FOLLOWING QUESTIONS:
1. WHAT WERE SOME OF THE THINGS THEY CONSIDERED BEFORE DECIDING WHETHER TO PUSH THE BUTTON?
  2. WHAT DID THEY DECIDE TO DO?
  3. ACCORDING TO HER, WHY DID SHE DO IT?



**SIMPLE PAST X PAST PERFECT  
CORALINE**

A. WATCH THE VIDEO SEGMENT AND WRITE ( 1 ) IN THE PARENTHESES OF THE ACTION THAT TOOK PLACE FIRST AND ( 2 ) IN THE PARENTHESES OF THE ACTION THAT HAPPENED LATER.

Ex: (1) CORALINE WENT THROUGH A PURPLE TUNNEL. (2) SHE ENTERED A BEAUTIFUL LIVING ROOM.

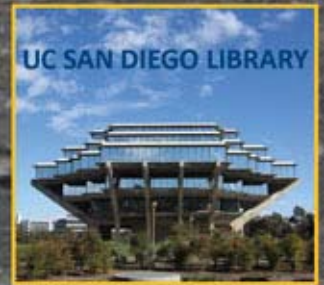
- (I) ( ) SHE SMELLED SOMETHING GOOD.  
( ) SHE SAW HER OTHER MOTHER COOKING IN THE KITCHEN.  
(II) ( ) CORALINE TALKED TO HER OTHER MOTHER IN THE KITCHEN.  
( ) HER FATHER SANG HER A SONG.

- (III) ( ) CAROLINE ATE SOME CHICKEN.  
( ) SHE DRANK SOME MANGO MILK SHAKE.  
(IV) ( ) SHE WENT TO BED IN A COMFORTABLE BEDROOM.  
( ) SHE WOKE UP IN AN UNCOMFORTABLE BEDROOM.

B. NOW FILL IN THE BLANKS USING THE PAST PERFECT TENSE FOR THE ACTION THAT TOOK PLACE FIRST AND THE SIMPLE PAST TENSE FOR THE ACTION THAT TOOK PLACE LATER.

Ex: CORALINE HAD GONE THROUGH A PURPLE TUNNEL WHEN SHE ENTERED A BEAUTIFUL LIVING ROOM.

- I. CORALINE \_\_\_\_\_ (SMELL) SOMETHING GOOD WHEN SHE \_\_\_\_\_ (SEE) HER OTHER MOTHER COOKING.
- II. SHE \_\_\_\_\_ (TALK) TO HER MOTHER IN THE KITCHEN WHEN HER FATHER \_\_\_\_\_ (SING) A SONG.
- III. CORALINE \_\_\_\_\_ (EAT) SOME CHICKEN WHEN SHE \_\_\_\_\_ (DRINK) MANGO JUICE.
- IV. SHE \_\_\_\_\_ (GO) TO BED IN A COMFORTABLE BEDROOM, BUT SHE \_\_\_\_\_ (WAKE UP) IN AN UNCOMFORTABLE ONE.



# UNIVERSITY OF CALIFORNIA, SAN DIEGO

## EXTENSION INTERNATIONAL PROGRAMS

With eight Nobel Prize winners on its faculty, **University of California, San Diego** is ranked as one of the top universities in the U.S. Situated on over five square kilometers and overlooking the Pacific Ocean, **UC San Diego** is located in "America's Finest City," known for its superb weather, safety, natural beauty, tourist attractions, and excellent business and research environment. In keeping with **UC San Diego's** strong academic reputation, **UC San Diego Extension International Programs** offer the finest English language, university credit, and professional certificate programs in the United States.

### ENGLISH LANGUAGE PROGRAMS

- Conversation
- Academic
- Business
- Medical
- TOEFL
- Legal
- Pre-University

### UNIVERSITY CREDIT PROGRAMS

- University and Professional Studies (UPS)
- Summer Youth Program: Academic Connections International

### PROFESSIONAL CERTIFICATES

- Business Essentials
- Business Management
- Teaching English as a Foreign Language (TEFL) Proficiency
- TEFL Six-month
- Special Studies in TEFL
- Teaching English to the Young Learner (TEYL)
- Teaching English Grammar (TEG)

EMAIL: [IPINFO@UCSD.EDU](mailto:IPINFO@UCSD.EDU)

[WWW.IP.EXTENSION.UCSD.EDU](http://WWW.IP.EXTENSION.UCSD.EDU)

